



Moon Orbiter - Modus Operandi

I. ACKNOWLEDGEMENTS | RJ-Romain Jerome would like to thank you for choosing the Moon Orbiter



You have bought an exceptional timepiece, the result of Swiss watchmaking tradition that combines craftsmanship and know-how with outstanding technological expertise.

Each component in your watch complies with the strict quality control standards imposed by RJ-Romain Jerome master watchmakers.

To guarantee the exclusivity of its designs, each RJ-Romain Jerome timepiece carries an individual number which certifies its authenticity.

Your timepiece is an exclusive creation and a high-end watch which will give you a lifetime of satisfaction.

II. DNA OF FAMOUS LEGENDS | Measure, capture and celebrate time...

Timepieces in the DNA of Famous Legends collection are inspired by and designed to pay tribute to the great legends of our time.

RJ-Romain Jerome breathes something of history into its creations and thus gives them a real soul.

III. MATERIALS | RJ-Romain Jerome takes great care in the choice of materials used to make its timepieces

It is pushing back design frontiers and using new materials in the manufacture of its watches.

These new materials are combined and used together with precious metal such as red gold.

RJ-Romain Jerome ensures that the origin of all these materials is duly certified by notarised act in Switzerland.

IV. MOON-DNA | The conquest of outer space.....

Moon-DNA is an exclusive and original collection, launched in 2009, inspired by the most fascinating human adventure of all: the conquest of space. RJ-Romain Jerome pays tribute to the Moon itself, to the technological breakthroughs, to the men behind these adventures and to the achievements of all those who have conquered space.

Whether by displaying Moon dust, elements of the Apollo 11 spacecraft or fibers from an International Space Station spacesuit, all the Moon-DNA timepieces hold a part of history.

V. MOON DUST | A thousand and one different tones...

A lunar dial designed around a mineral deposit incorporating moon dust.

The watchmakers of Romain Jerome have developed a revolutionary procedure borrowed from the world of art, applying a mineral coating containing authentic Moon dust blended with natural pigments. This patented technique gives the dials a multitude of fine, natural nuances.

VI. APOLLO XI | Blended steel.....

The 1.4435-XI steel cases are created using 1.4435 stainless steel, traditionally used in fine watchmaking, and 1969 steel taken from the Apollo XI spacecraft.

VII. FLYING TOURBILLON

The Tourbillon is a watch complication designed to compensate for mechanical losses and operational errors in the movement due to the earth's gravitational force.

The device comprises a carriage on which the escapement mechanism sits. This revolves once a minute upon itself, thereby cancelling out variations in rate.

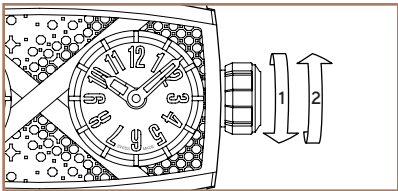
Indisputable evidence of the ingenuity of master watchmakers, the Tourbillon is among the most sophisticated of watch complications.

The Moon Orbiter movement has been developed exclusively for RJ-Romain Jerome. This flying tourbillon at nine o'clock is held by a 3D arm, playing the role of a launching pad.

VIII. SCREW-IN CROWN

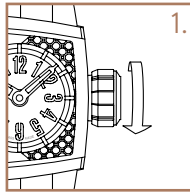


The screw-in crown provide additional protection and increase the case's water resistance. Be sure to never unscrew the crown while under water.



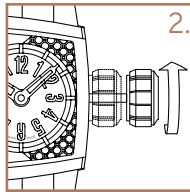
The crown must be unscrewed (1) before performing any operation and screwed back in fully (2) once you have finished using it.

IX. WINDING



Winding creates the tension required to enable your watch to operate properly.

The watch winds itself “automatically” when on the wrist as the movement caused by wearing creates sufficient energy to operate the mechanism.

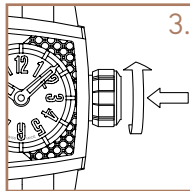


When the watch has not been worn for some time, you will have to wind it “manually”:

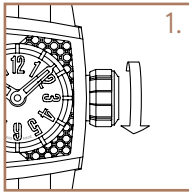
1. Unscrew the crown

2. Wind by turning the crown about fifteen times

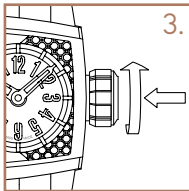
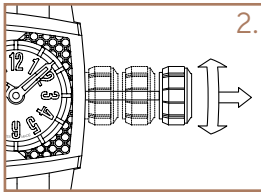
3. Screw the crown back in



X. SETTING THE TIME



1. Unscrew the crown
2. Pull it to set the minute and hour hands by turning the crown
3. Screw the crown back in



XII. POWER RESERVE

Your Moon Orbiter is fitted with a selfwinding movement, with 42 hours power reserve which is displayed at 6 o'clock.

The power reserve represents the time the watch will operate between 2 manual windings, without wearing the watch.

XIII. MAINTENANCE

Your RJ-Romain Jerome timepiece is protected against temperature variations, damp, dust and water thanks to its high quality components.

If exposed to extreme conditions, this protective system may deteriorate with use.

You are strongly recommended to have the water resistance checked every 2 years. Your Moon Orbiter is water-resistant to a depth of 30 meters.

You are strongly advised to rinse your watch after swimming in the sea.

XIV. WARRANTY

The individual number marked on your RJ-Romain Jerome timepiece certifies its authenticity.

It also identifies the watchmaker who made the watch and ensures monitoring of the complete manufacturing process within our factory.

Your RJ-Romain Jerome watch is guaranteed against all manufacturing defects for 24 months from the date on your warranty card which must be duly completed and signed by an authorised RJ-Romain Jerome dealer.

If, despite all our efforts, your watch requires a repair, take it to your jeweller, along with your warranty.

This warranty does not cover deterioration or damage resulting from incorrect operation, unfortunate accidents, negligence and improper use.

Wear and tear on the strap, the glass and any other action by a third party not authorised by Romain Jerome are not covered by the warranty.

For further information please contact: sav@romainjerome.ch

www.romainjerome.ch