



## Tourbillon - Modus Operandi

## **I. ACKNOWLEDGEMENTS | We would like to thank you for choosing a RJ-Romain Jerome timepiece**

You have just bought an exceptional timepiece, the result of Swiss watchmaking tradition that combines craftsmanship and know-how with outstanding technological expertise.

Each component in your watch complies with the strict quality control standards imposed by RJ-Romain Jerome master watchmakers. To guarantee the exclusivity of its designs, each RJ-Romain Jerome timepiece carries an individual number which certifies its authenticity. Your RJ-Romain Jerome timepiece is an exclusive and unique creation, a high-end watch that will give you a lifetime of satisfaction and loyal service.

## **II. DNA OF FAMOUS LEGENDS | Measure, capture and celebrate time...**

Timepieces in the DNA of Famous Legends collection are inspired by and designed to pay tribute to the great legends of our time.

RJ-Romain Jerome breathes something of history into its creations and thus gives them a real soul.

## **III. MATERIALS | RJ-Romain Jerome takes great care in the choice of materials used to make its timepieces**

It is pushing back design frontiers and using new materials in the manufacture of its watches. These new materials are combined and used together with precious metal such as red gold, traditionally used in the design and the creation of luxury watches.

RJ-Romain Jerome ensures that the origin of all these materials is duly certified by notarised act in Switzerland.

#### **IV. TITANIC-DNA | From embodying a legend to the rebirth of an era...**

Titanic-DNA is an exclusive and original collection, inspired by the legendary ship that emerged from the Harland & Wolff shipyard in Belfast on April 10<sup>th</sup>, 1912.

RJ-Romain Jerome pays tribute to the famous ship by incorporating a portion of history into its timepieces.

The timepieces in the Titanic-DNA collection combine complex watchmaking techniques, innovative materials and bold design.

#### **V. RUST | The glory of time past...**

Rust derived from melting the Titanic's corroded steel with that provided by the Harland & Wolff shipyard.

Fe<sub>2</sub>O<sub>3</sub>, iron oxide, more commonly known as "rust", has for long been the enemy of watchmaking and industry generally, since a major concern has been to protect materials from corrosion, which is evidence of the ravages of time on materials.

RJ-Romain Jerome master watchmakers have developed a rust stabilisation process that will protect your oxidised watch against any further corrosion.

## **VI. MOON-DNA | The conquest of outer space.....**

Moon-DNA is an exclusive and original collection, launched in 2009, inspired by the most fascinating human adventure of all: the conquest of space. RJ-Romain Jerome pays tribute to the Moon itself, to the technological breakthroughs, to the men behind these adventures and to the achievements of all those who have conquered space.

Whether by displaying Moon dust, elements of the Apollo 11 spacecraft or fibers from an International Space Station spacesuit, all the Moon-DNA timepieces hold a part of history.

## **VII. MOON DUST | A thousand and one different tones...**

A lunar dial designed around a mineral deposit incorporating moon dust.

The watchmakers of Romain Jerome have developed a revolutionary procedure borrowed from the world of art, applying a mineral coating containing authentic Moon dust blended with natural pigments. This patented technique gives the dials a multitude of fine, natural nuances.

## **VIII. APOLLO XI | Blended steel.....**

The 1.4435-XI steel cases are created using 1.4435 stainless steel, traditionally used in fine watchmaking, and 1969 steel taken from the Apollo XI spacecraft.

## IX. TOURBILLON

The Tourbillon is a watch complication designed to compensate for mechanical losses and operational errors in the movement due to the earth's gravitational force.

The device comprises a carriage on which the escapement mechanism sits. This revolves once a minute upon itself, thereby cancelling out variations in rate.

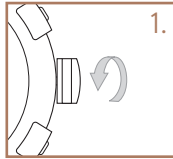
Indisputable evidence of the ingenuity of master watchmakers, the Tourbillon is among the most sophisticated of all watch complications.

To celebrate this superior and delicate mechanism, RJ-Romain Jerome has taken up the challenge of setting some of its Tourbillon carriages with diamonds as a worldwide first.

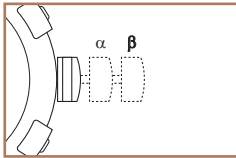
Thus a RJ-Romain Jerome Tourbillon will be much more than a mechanical creation. It will be a real work of art.

MODELS	MOVEMENT	POWER RESERVE
Titanic-DNA Chrono Tourbillon	Self-winding	120h
Titanic-DNA Tourbillon	Self-winding	120h
Titanic-DNA Day&Night Double Tourbillon	Manual-winding	120h
Steampunk Tourbillon	Self-winding	72h
Moon Dust Roswell Tourbillon	Manual-winding	120h

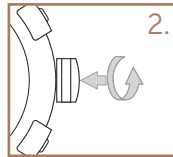
## X. SCREW-IN CROWN



The screw-in crown provides additional protection and increases the case's water resistance.

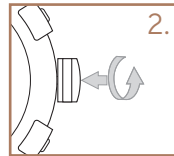
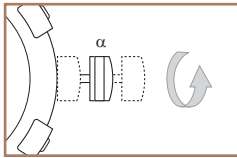
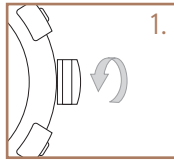


The crown must be unscrewed (1) before performing any operation and screwed back in fully (2) once you have finished using it.



Use the crown to wind the watch ( $\alpha$ ) and to set the time ( $\beta$ )

## XI. WINDING



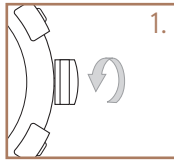
Winding creates the tension required to enable your watch to operate properly.

If your timepiece has a manual-winding movement, you will have to wind it every 72 hours or 120 hours depending on the model.

If your timepiece has a self-winding movement, the watch winds itself "automatically" when the movement caused by wearing creates sufficient energy to operate the mechanism. But if the watch has not been worn for some time, you will have to wind it "manually".

1. Unscrew the crown
- α. Wind by turning the crown about fifteen times
2. Screw the crown back in

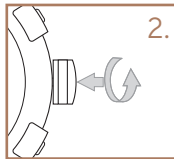
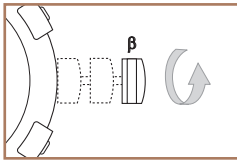
## XII. SETTING THE TIME



1. Unscrew the crown

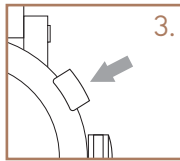
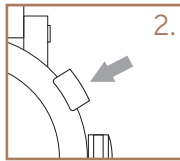
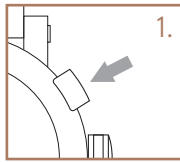
β. Pull it to set the minute and hour hands by turning the crown

2. Screw the crown back in to ensure water resistance





## XII. CHRONOGRAPH



The chronograph measures elapsed time which is indicated by the second hand, located at the centre of the movement. The dial features three counters to indicate hours, minutes and seconds.

**Start:** Press push-button at 2 o'clock (1.) to start the second hand. Once the time has reached one minute or more, the minute hand found on the left counter will move.

**Stop:** Press push-button (2.) again to stop the second hand and read the time measured

**Resetting to zero:** Press push-button (3.) to return the counters and the second hand to their initial position

#### XIV. MAINTENANCE

Your RJ-Romain Jerome timepiece is protected against temperature variations, perspiration, damp, dust and water thanks to its high quality components.

If exposed to extreme conditions, this protective system may deteriorate with use.

You are strongly recommended to have the water resistance checked every 2 years. Your watch is water-resistant to a depth of 30 meters.

You are strongly advised to rinse your watch after swimming in the sea.

## XV. WARRANTY

The individual number marked on your RJ-Romain Jerome timepiece certifies its authenticity.

It also identifies the watchmaker who made the watch and ensures monitoring of the complete manufacturing process within our factory.

Your RJ-Romain Jerome watch is guaranteed against all manufacturing defects for 24 months from the date on your warranty card which must be duly completed and signed by an authorised RJ-Romain Jerome dealer.

If, despite all our efforts, your watch requires a repair, take it to your jeweller, along with your warranty.

This warranty does not cover deterioration or damage resulting from incorrect operation, unfortunate accidents, negligence and improper use.

Wear and tear on the leather strap, the glass and any other action by a third party not authorised by Romain Jerome are not covered by the warranty.

For further information please contact: [sav@romainjerome.ch](mailto:sav@romainjerome.ch)

[www.romainjerome.ch](http://www.romainjerome.ch)