



Automatic & Chronograph - Modus Operandi

I. ACKNOWLEDGEMENTS | We would like to thank you for choosing a RJ-Romain Jerome timepiece

You have just bought an exceptional timepiece, the result of Swiss watchmaking tradition that combines craftsmanship and know-how with outstanding technological expertise.

Each component in your watch complies with the strict quality control standards imposed by RJ-Romain Jerome master watchmakers. To guarantee the exclusivity of its designs, each RJ-Romain Jerome timepiece carries an individual number which certifies its authenticity. Your RJ-Romain Jerome timepiece is an exclusive and unique creation, a high-end watch that will give you a lifetime of satisfaction and loyal service.

II. DNA OF FAMOUS LEGENDS | Measure, capture and celebrate time...

Timepieces in the DNA of Famous Legends collection are inspired by and designed to pay tribute to the great legends of our time.

RJ-Romain Jerome breathes something of history into its creations and thus gives them a real soul.

III. MATERIALS | RJ-Romain Jerome takes great care in the choice of materials used to make its timepieces

It is pushing back design frontiers and using new materials in the manufacture of its watches. These new materials are combined and used together with precious metal such as red gold, traditionally used in the design and the creation of luxury watches.

RJ-Romain Jerome ensures that the origin of all these materials is duly certified by notarised act in Switzerland.

IV. TITANIC-DNA | From embodying a legend to the rebirth of an era...

Titanic-DNA is an exclusive and original collection, inspired by the legendary ship that emerged from the Harland & Wolff shipyard in Belfast on April 10th, 1912.

RJ-Romain Jerome pays tribute to the famous ship by incorporating a portion of history into its timepieces.

The timepieces in the Titanic-DNA collection combine complex watchmaking techniques, innovative materials and bold design.

V. RUST | The glory of time past...

Rust derived from melting the Titanic's corroded steel with that provided by the Harland & Wolff shipyard.

Fe₂O₃, iron oxide, more commonly known as "rust", has for long been the enemy of watchmaking and industry generally, since a major concern has been to protect materials from corrosion, which is evidence of the ravages of time on materials.

RJ-Romain Jerome master watchmakers have developed a rust stabilisation process that will protect your oxidised watch against any further corrosion.

VI. MOON-DNA | The conquest of outer space.....

Moon-DNA is an exclusive and original collection, launched in 2009, inspired by the most fascinating human adventure of all: the conquest of space. RJ-Romain Jerome pays tribute to the Moon itself, to the technological breakthroughs, to the men behind these adventures and to the achievements of all those who have conquered space.

Whether by displaying Moon dust, elements of the Apollo 11 spacecraft or fibers from an International Space Station spacesuit, all the Moon-DNA timepieces hold a part of history.

VII. MOON DUST | A thousand and one different tones...

A lunar dial designed around a mineral deposit incorporating moon dust.

The watchmakers of Romain Jerome have developed a revolutionary procedure borrowed from the world of art, applying a mineral coating containing authentic Moon dust blended with natural pigments. This patented technique gives the dials a multitude of fine, natural nuances.

VIII. APOLLO XI | Blended steel.....

The 1.4435-XI steel cases are created using 1.4435 stainless steel, traditionally used in fine watchmaking, and 1969 steel taken from the Apollo XI spacecraft.

IX. EYJAFJALLAJÖKULL-DNA | A contemporary legend.....

RJ illustrates the legends of our time and the mythologies that will forge the memory of the 21st century. A time-piece with its finger on the pulse of the latest events, designed with ash from the erupting Eyjafjallajökull volcano which is establishing itself as one of the most intimate symbols of our global contemporary emotions.

Above and beyond the words and pictures heard and seen over and over again on our TV and computer screens, the visual impact of this form of telluric inevitability serves as a fresh reminder of the inherent vulnerability of our world view. Behind the ash cloud lies the vanity of our philosophies of time.

X. ASH & LAVA | A thousand and one different tones...

As if revealed beneath the dial through a bold stylistic effect and ready to burst forth at any moment, the lava ejected from the core of the planet illustrates an inner strength capable of setting fire to time – in this case held captive by a steel bezel and volcanic ash. The rough, brutal, fissured dial is crafted from ash ejected by the Eyjafjallajökull volcano.

Each Eyjafjallajökull-DNA model is accompanied by a certificate of authenticity confirming that the volcanic rock and the ash do indeed come from the Eyjafjallajökull volcano.

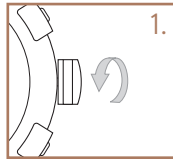
XI. LIBERTY-DNA | Enlightening the World.....

To celebrate the 125th anniversary of the Statue of Liberty, RJ-Romain Jerome unveiled the fruit of an unprecedented collaborative endeavour with The Statue of Liberty-Ellis Island Foundation and Gold Leaf Corporation. This encounter has resulted in a new RJ-Romain Jerome timepiece merging the brand DNA with that of Miss Liberty, thereby giving shape to a new symbolic legend.

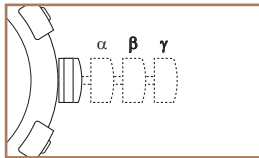
XII. BRONZE | A thousand and one different tones...

Fragments of the Statue of Liberty were recovered during the restoration work undertaken for its centenary. In partnership with The Statue of Liberty-Ellis Island Foundation, Gold Leaf Corporation supplied the historical artifacts to RJ-Romain Jerome, which then incorporated it into the dial.

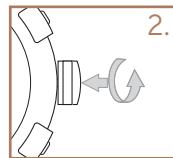
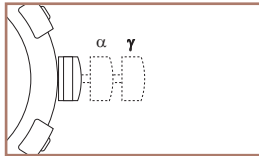
XIII. SCREW-IN CROWN



with date



without date

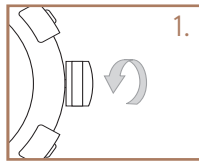


The screw-in crown provides additional protection and increases the case's water resistance.

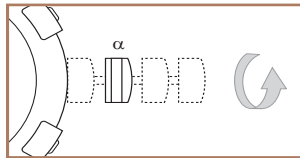
The crown must be unscrewed (1) before performing any operation and screwed back in fully (2) once you have finished using it.

Use the crown to wind the watch (α), to adjust the date (β) - if your time piece has this function - and to set the time (γ).

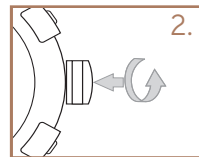
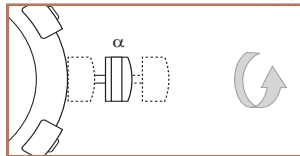
XIV. WINDING



with date



without date



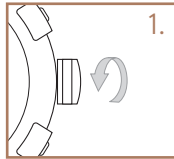
Winding creates the tension required to enable your watch to operate properly.

The watch winds itself "automatically" when the movement caused by wearing creates sufficient energy to operate the mechanism.

When the watch has not been worn for some time, you will have to wind it "manually":

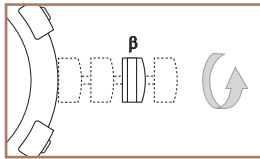
1. Unscrew the crown
- α . Wind by turning the crown about fifteen times
2. Screw the crown back in

XV. SETTING THE DATE



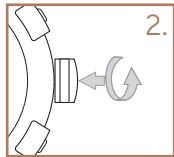
1. Unscrew the crown

β. Set the date by turning the crown

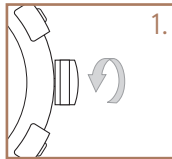


2. Screw the crown back in to ensure water resistance.

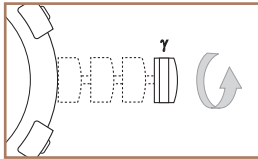
You are strongly advised not to set the date between 8 PM and 1 AM o'clock so as not to risk damaging the watch's mechanism, since the calendar wheel will then be in gear.



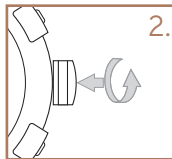
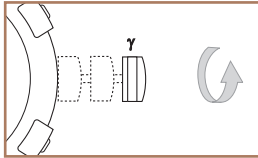
XVI. SETTING THE TIME



with date



without date

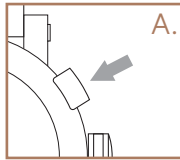


1. Unscrew the crown

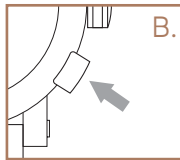
γ . Pull it to set the minute and hour hands by turning the crown

2. Screw the crown back in to ensure water resistance

XVII. CHRONOGRAPH



The chronograph measures elapsed time which is indicated by the second hand, located at the centre of the movement. The dial features three counters to indicate hours, minutes and seconds.



Start: Press push-piece (A) to start the second hand

Stop: Press push-piece (A) again to stop the second hand and read the time measured

Resetting to zero: Press push-piece (B) to return the counters and the second hand to their initial position

XVIII. POWER RESERVE

Your timepiece is fitted with a selfwinding movement, with 42 hours power reserve.

The power reserve represents the time the watch will operate between 2 manual windings, without wearing your watch.

XIX. MAINTENANCE

Your RJ-Romain Jerome timepiece is protected against temperature variations, perspiration, damp, dust and water thanks to its high quality components.

If exposed to extreme conditions, this protective system may deteriorate with use.

You are strongly recommended to have the water resistance checked every 2 years. Your watch is water-resistant to a depth of 30 meters.

You are strongly advised to rinse your watch after swimming in the sea.

XX. WARRANTY

The individual number marked on your RJ-Romain Jerome timepiece certifies its authenticity.

It also identifies the watchmaker who made the watch and ensures monitoring of the complete manufacturing process within our factory.

Your RJ-Romain Jerome watch is guaranteed against all manufacturing defects for 24 months from the date on your warranty card which must be duly completed and signed by an authorised RJ-Romain Jerome dealer.

If, despite all our efforts, your watch requires a repair, take it to your jeweller, along with your warranty.

This warranty does not cover deterioration or damage resulting from incorrect operation, unfortunate accidents, negligence and improper use.

Wear and tear on the leather strap, the glass and any other action by a third party not authorised by Romain Jerome are not covered by the warranty.

For further information please contact: sav@romainjerome.ch

www.romainjerome.ch